



**FEATURES:**

- RoHS compliant
- 8 Pin DIP Package
- Low ripple and noise
- High efficiency up to 80%
- Operating temperature -40°C to + 85°C
- Input / Output isolation 1000 and 3000VDC
- Pin computable with multiple manufacturers
- UL94-VO Package

**Models**  
**Single output**

Model	Input Voltage (V)	Output Voltage (V)	Output Current max (mA)	Isolation (VDC)	Efficiency (%)
AM1P-1207S-NZ	10.8-13.2	7.2	140	1000	76
AM1P-2405SH30-NZ	21.6-26.4	5	200	3000	75

**Models**  
**Dual output**

Model	Input Voltage (V)	Output Voltage (V)	Output Current max (mA)	Isolation (VDC)	Efficiency (%)
AM1P-0512D-NZ	4.5-5.5	±12	±83.3	1000	80
AM1P-0515D-NZ	4.5-5.5	±15	±34	1000	80

**Input Specifications**

Parameters	Conditions	Typical	Maximum	Units
Voltage range		4.5-5.5 10.8-13.2 21.6-26.4		VDC
Filter	Capacitor			

**Isolation Specifications**

Parameters	Conditions	Typical	Maximum	Units
Rated voltage	60 sec	1000 and 3000VDC		
Resistance		> 1000 MOhm		
Capacitance		60 pF		

**Output Specifications**

Parameters	Conditions	Typical	Maximum	Units
Voltage accuracy			See tolerance graph	
Short Circuit protection	1sec			
Line voltage regulation (Single)		±1.2 / 1		% of Vin
Line voltage regulation (Dual)		±1.2 / 1		
Load voltage regulation (Single)	Load 10 – 100%		10	%
Load voltage regulation (Dual)	Load 10 – 100%		10	%
Temperature coefficient			±0.03	%/°C
Ripple & Noise		75		m Vp-p

**General Specifications**

Parameters	Conditions	Typical	Maximum	Units
Switching frequency	100% load	150		KHz
Operating temperature	Without derating	-40°C to +85°C		
Storage temperature		-55°C to +125°C		

Case temperature		90	°C
Cooling	Free air convection		
Humidity	Non condensing	90	%
Case material	Plastic UL94-VO		
Weight		1.8	g
Dimensions		0.46 x 0.39x 0.3 inches	11.7 x 9.8 x 7.7 mm
MTBF	>1 000 000 hrs (MIL-HDBK -217F, Ground Benign, t=+25°C)		

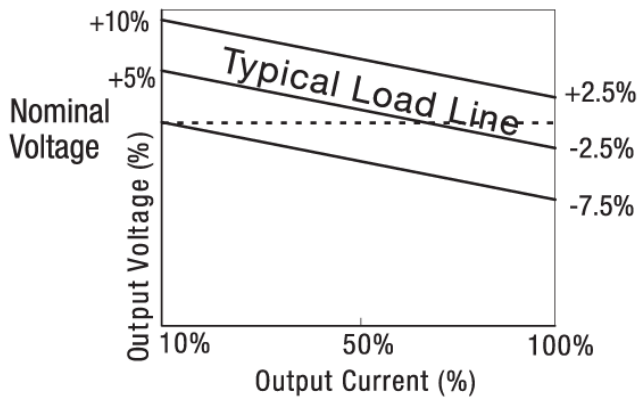
Pin Out Specifications

Pin	1000 and 3000 VDC	
	Single	Dual
1	- V Input	- V Input
4	+ V Input	+ V Input
5	+ V Output	+ V Output
6	No pin	No pin
7	- V Output	Common
8	No pin	- V Output

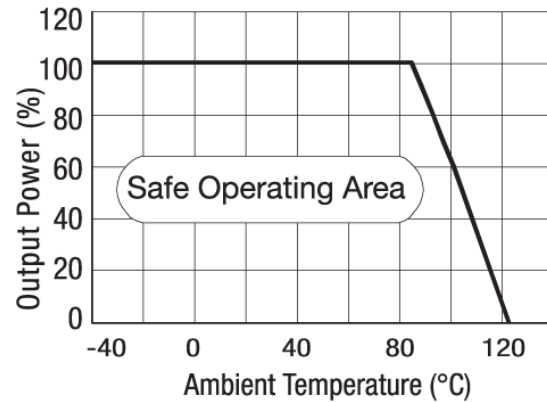
External capacitor

Vin (VDC)	External capacitor (uF)	Vout (VDC)	External capacitor (uF)
5	4.7	5	10
12	2.2	9	4.7
24	1	12	2.2
-	-	15	1

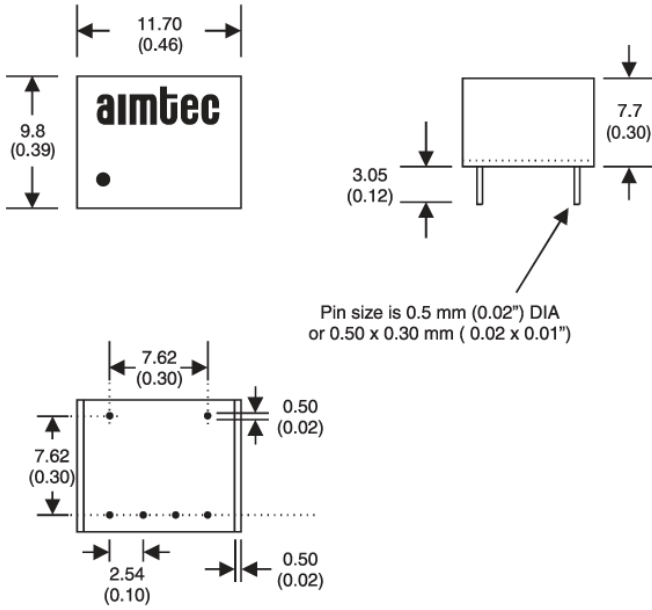
Tolerance Envelope Graph



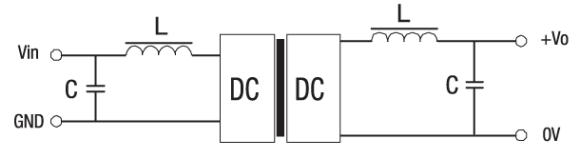
Temperature Derating Graph



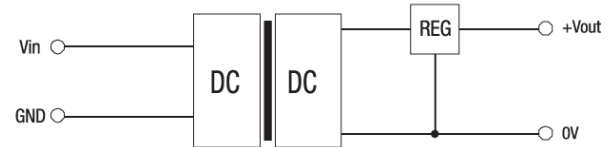
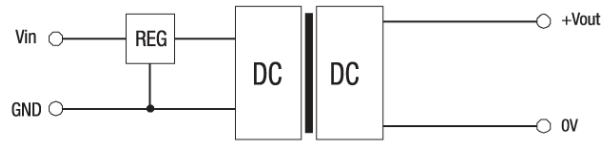
**Dimensions**



**Filtering**



<Figure 1>



<Figure 2>